

Mehrfamilienhaus 2017

Standort 2564 Bellmund

Planung Dezember 2014 - Sommer 2015

Ausführung Frühling 2016 - Winter 2017

Eckdaten 885 m2 NGF nach SIA 416

Bauherrschaft Privat

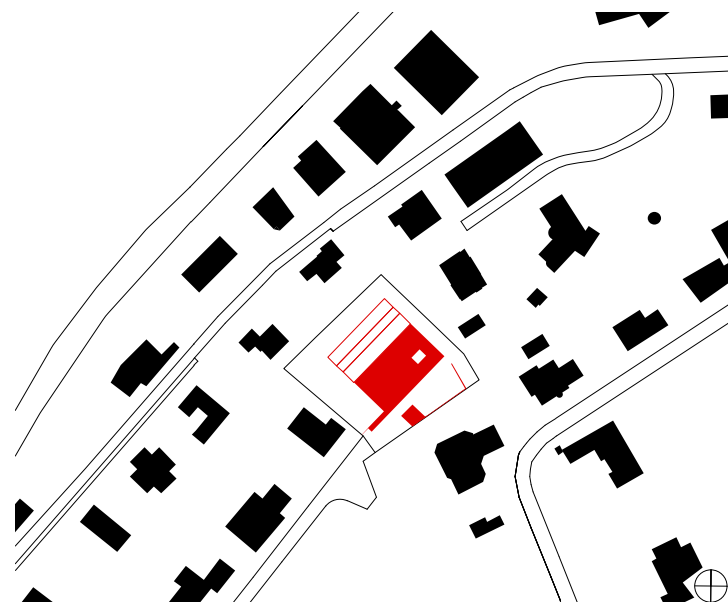
Architekten GLS Architekten AG

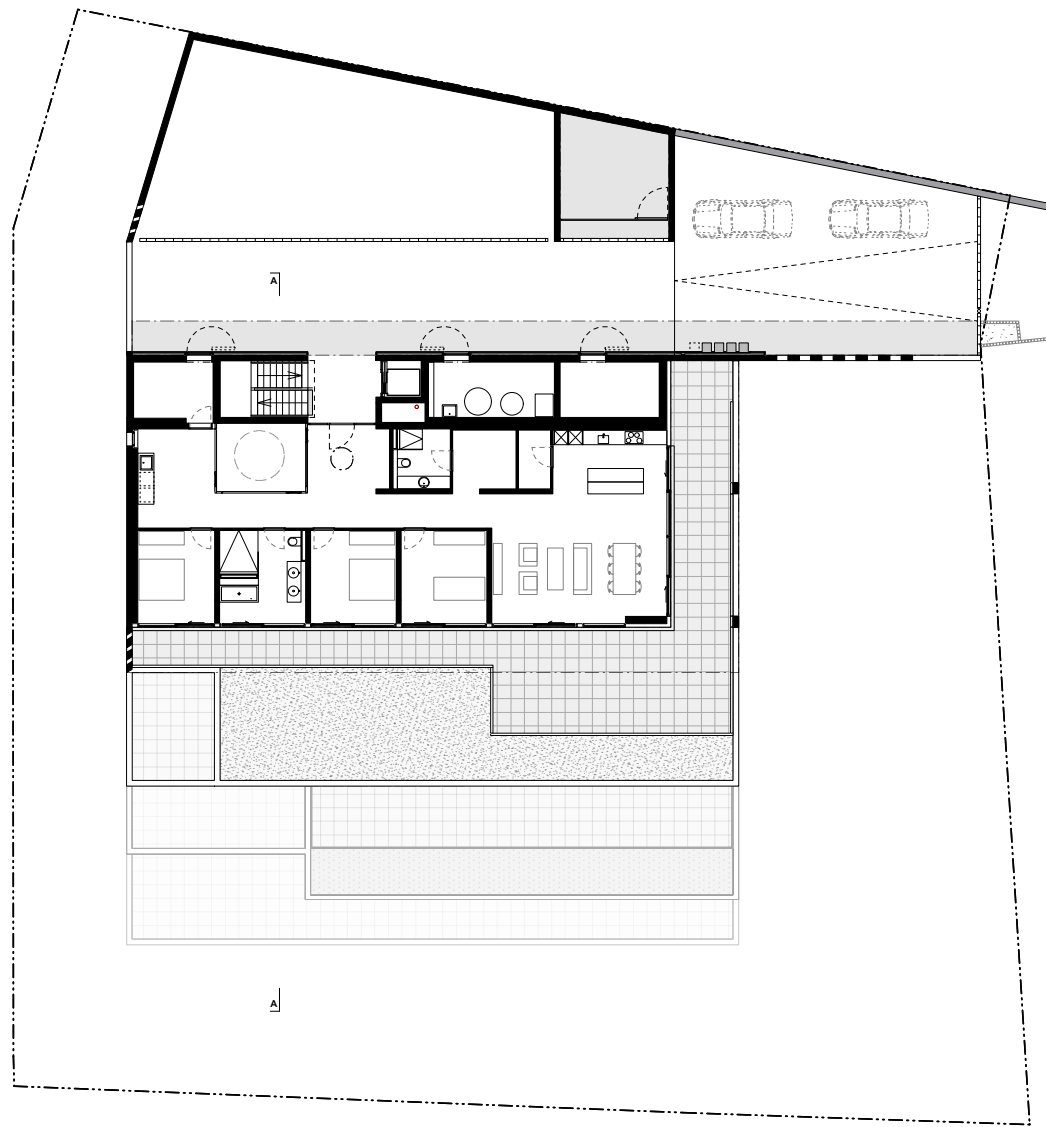
Bauleitung GLS Architekten AG

Bauingenieur Mantegani & Wysser AG

Ingenieur HLKS Matter + Ammann AG

Bauphysiker Walther Bauphysik AG

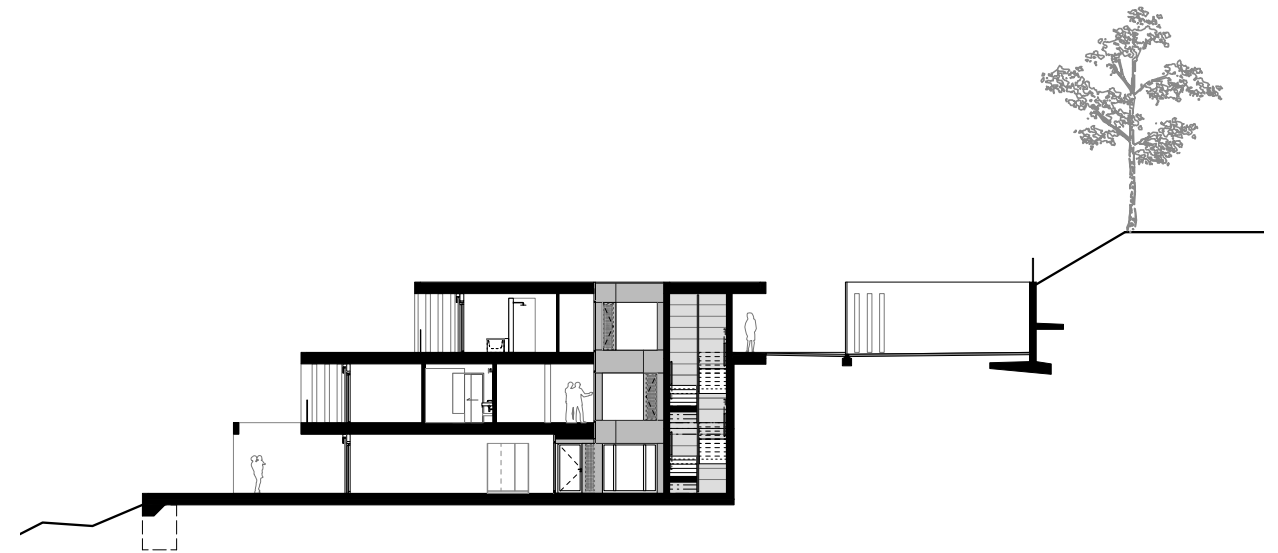




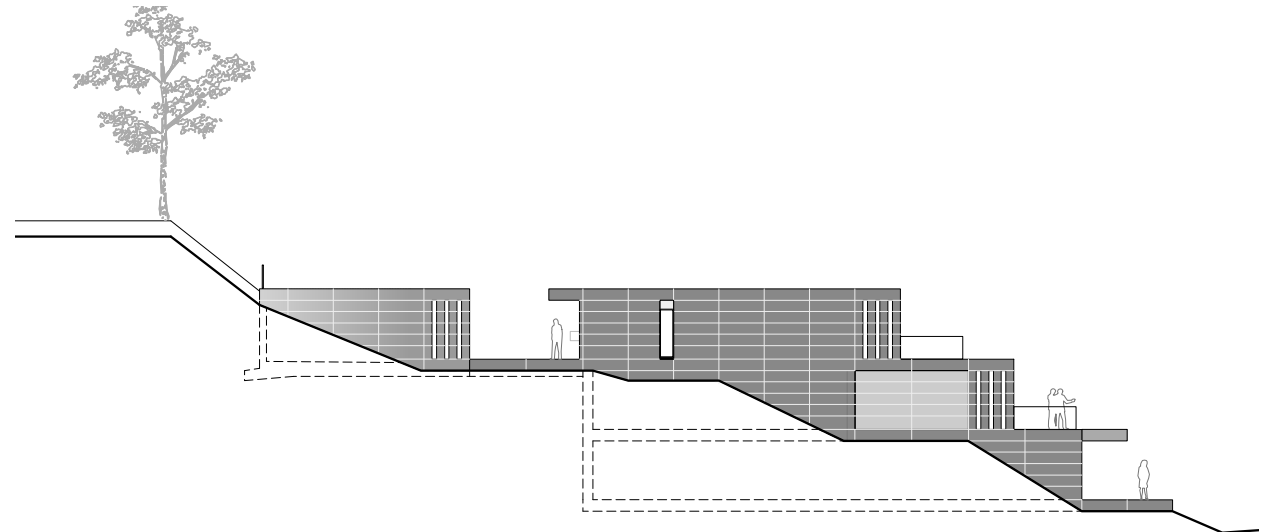
OG.2



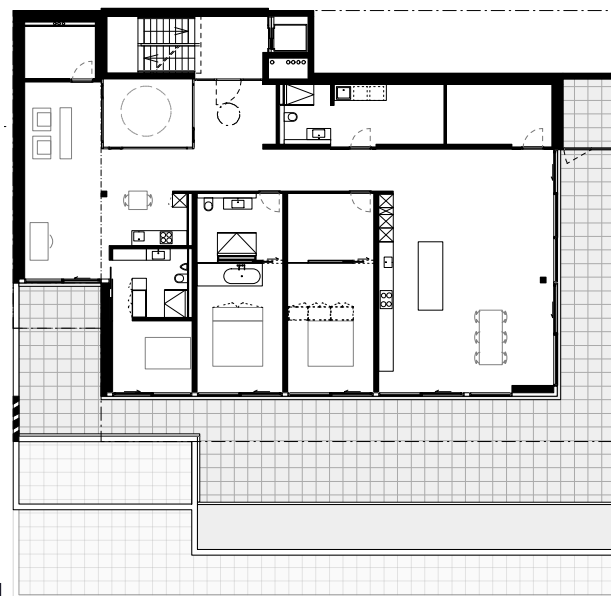
A-A



Ansicht Ost



OG.1



EG

